

( ) ,

**EURO-ASIAN CONCIL FOR STANDARTIZATION, METROLOGY AND CERTIFICATION  
(EASC)**



**EN 1928–  
2011**

( )

( N 1928:2000, IDT)

7036  
« 25 »



-  
,  
( )

2009 « 1.0 – 92 « 1.2 –  
 1 « - -  
 2 » (« »)  
 3 465 « » 4  
 2011 .) ( ) ( 39 8

(ISO 3166) 004 – 97	(ISO 3166) 004 – 97	
	AZ	
	AM	
	KZ	-
	KG	
	MD	
	RU	
	TJ	
	UZ	
	UA	-

4 N 1928:2000 Flexible sheets for waterproofing – Bitumen, plastic and rubber sheets for roof waterproofing – Determination of watertightness [ ( ) ].

(en). 1.5–2001 ( 3.6).

5 – (IDT)

( ) ( )  
 « », - ( )  
 « ».  
 » «

1 .....  
2 .....  
3 .....  
4 .....  
5 .....  
6 .....  
7 .....  
8 .....  
9 .....  
10 .....  
· ( )  
.....

，  
-  
( ) ，  
，  
，  
·  
，  
，  
，  
，

---

(  
)

Roofing and hydraulic-insulating flexible bitumen-based and polymeric  
(thermoplastic or elastomer) materials. Method for determination of watertightness

---

**1**

( ) ( -  
) , . . .  
.  
.  
.  
.  
.

**2**

:

N 13416:2001 Flexible sheets for waterproofing – Bitumen, plastic and rubber sheets for roof  
waterproofing – Rules for sampling [ .

(  
) . ]

**3**

:

---

3.1 (upper side): ,  
;

3.2 (watertightness): :

) : ,  
,

b) B: 5 %

## 4

4.1 :

### 4.1

,  
,  
.

60 24 .

### 4.2

,  
,  
.

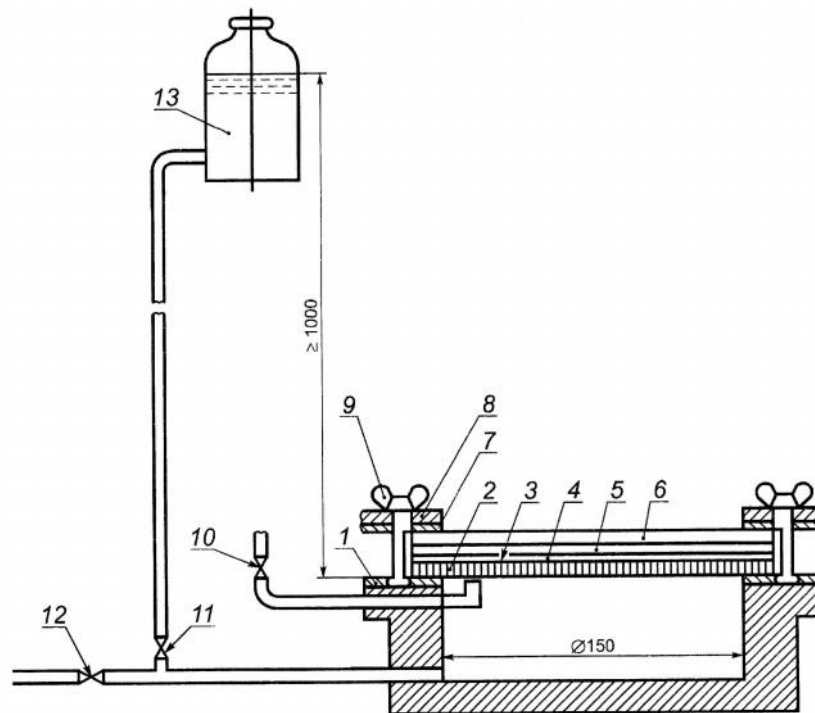
24 ,

## 5

### 5.1

,  
,  
1,  
150 ,  
,

1 .



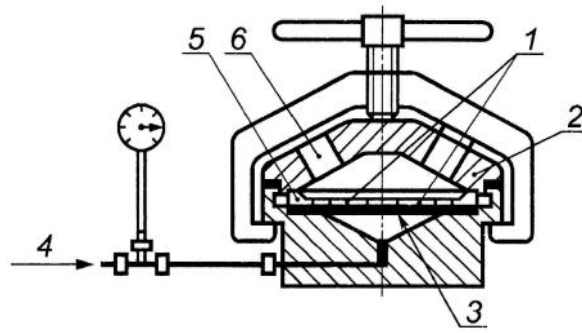
1 - ; 2 - ,  
 ; 3 - ; 4 - ,  
 , (99,5 %) , (0,5 %),  
 0,074  
 ; 5 - ; 6 -  
 5 10 , 8  
 60 ; 7 - ; 8 - ;  
 9 - - ; 10 - ; 11 - ;  
 12 - ; 13 - ;  
 60 ( )

1 -

**5.2**

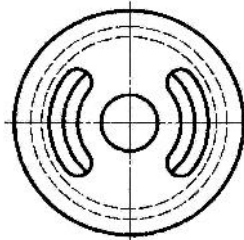
2 3,

4.

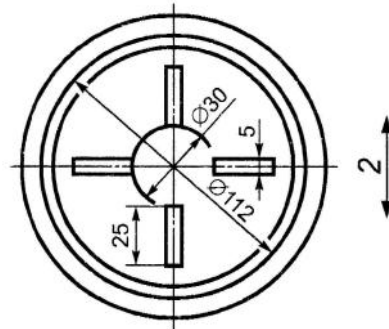
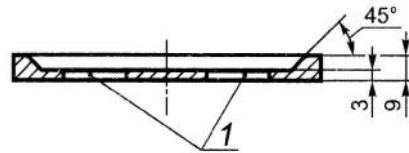


1 – ; 2 – ; 3 – ; 4 –  
; 5 – ; 6 –

2 –



3 –



1 – 0,5 ; 2 –

4 –

**6**



**7**

**7.1**

100

).

**7.2**

**7.2.1**

(200 ± 2)

**7.2.2**

( 130 ).

**7.2.3**

(23 ± 5) °

6 .

**8**

**8.1**

(23 ± 5) ° .

(23 ± 2)

(50 ± 5) %.

**8.2**

( .5.1)

9

11

10

10

(24 ± 1)

8.3

2,

(24 ± 1) ,

( . 4).

).

9

9.1

9.1.1

9.1.2

9.2

10

- a) ,
- b)
- c)
- d)
- e)

;  
;  
6;  
7;

;

f)

9;

g)

.

( )

. .1

-		
N 13416:2001 . - ( ). -	IDT	N 13416 – 2011  - ( ). -
IDT -	:	-

---

692.415.001.4:006.354	91.100.99	IDT
:		
(	)	,

---